

**Begin Your VIRTUAL TOUR...**  
**(...just a few seconds for the file to load).**



**Keyboard RIGHT ARROW**  
**for next slide...**



**11340 Bridge Pine Dr, Riverview, FL 33569**  
**A Conveniently Located Popular Community**

# SUMMARY

**1,794 / 2,613 Heated and Total Sq/Ft – 2006**

**One Story – 3 Bedroom – 2 Bathrooms – 2 Car Garage**

**Remodeled – tasteful upgrades – shows like new home.**

**Popular community with pool, tennis, basketball playground, park, kindergarten, elementary school.**

**Close to I-75, shops, restaurants – Riverview is the place to be – Tampa's #1 growing community.**

**MLS # T2826166 - FULL DESCRIPTION after pictures.**



**Front View - Oversized Corner Pie-shaped Lot - 2,613 total sq/ft**





**Formal Dining Room with front view 12' x 11'**



**Formal Dining Room**





**Formal Living Room or Bonus Room or Open Office 12' x 12'**



**Formal Living onto Family Room - Quality Laminate Floors**





**Open Plan Family Room with sliding doors on Patio 20' x 15'**





**Open Plan Family Room**



**Open plan Family Room onto Kitchen/Dinette**





**Kitchen w/ Granite & integrated stainless steel sink 13' x 12'**



**Kitchen with Matching stainless steel appliances**





**Kitchen with 42" White cabinets with hardware & backsplash**



**Dinette off Kitchen 13' x 8'**





**Dinette onto Family Room**



**Large Master Bedroom 17' x 13'**





**Large Master Bedroom with back view**



**Large Master Bedroom with walk-in-closet**





**Master Bathroom with vanity, dual sinks, mirrors & garden tub**



**Master Bathroom with separate shower and W.C.**





**Bedroom 2 – 12' x 11'**

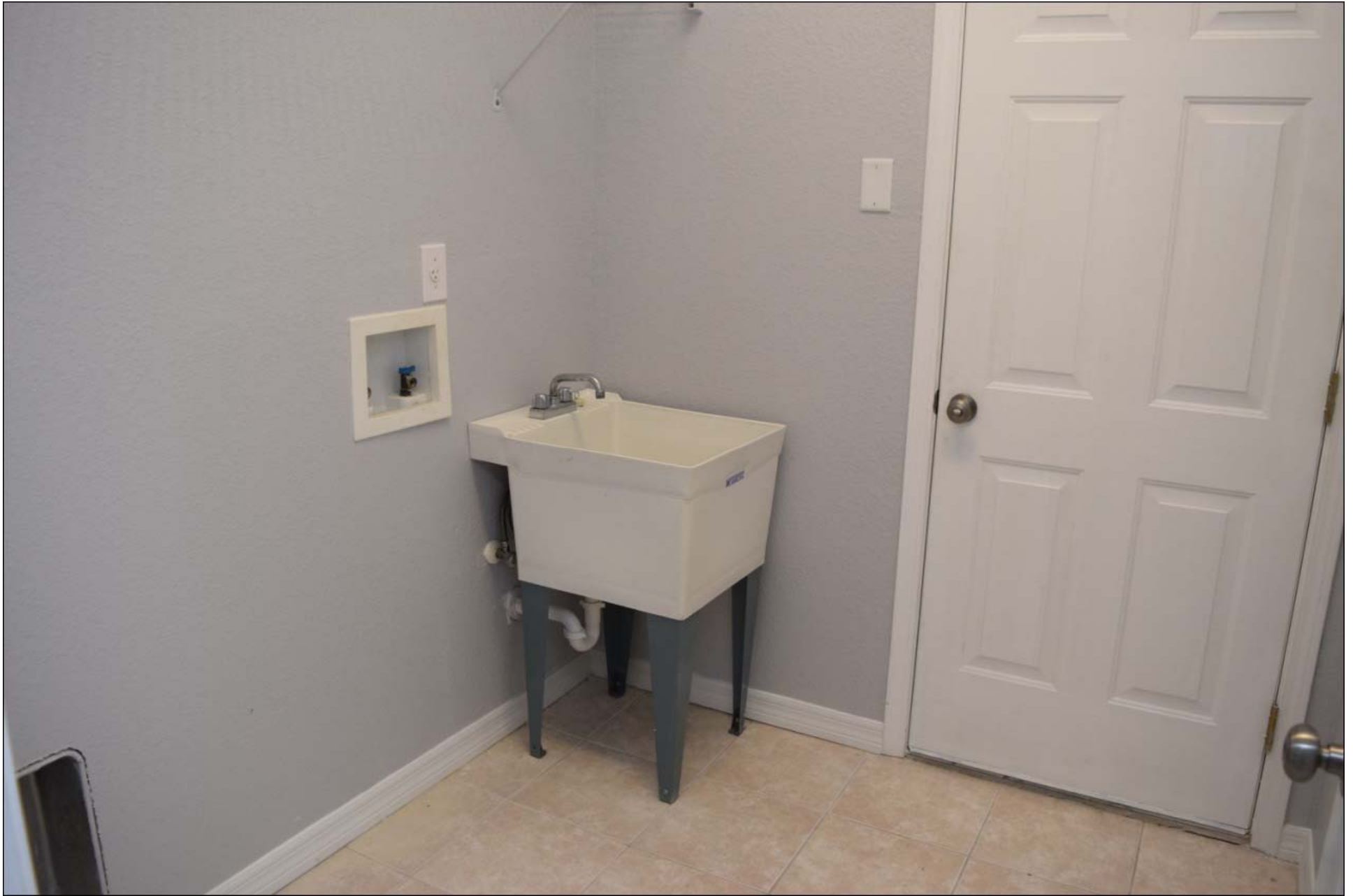


**Bedroom 3 – 13' x 10'**





**Bathroom 2 with shower in Tub, vanity and framed mirror**



**Laundry with washtub onto 2 Car Garage**





**Screened in back Patio onto back yard 27' x 9'**





**OVERSIZED CORNER  
PIE-SHAPED LOT**





**Pools, Hot Tub, Clubhouse, Tennis, Basketball, Playground**

## Full Description...

3/2/2 -- 1,794/2,613 Heated & Total Sq/Ft respectively -- 2006.

Totally renovated - shows like a new model home.

Rivercrest is a sought after community, well situated with quick access to shops, hospital and highways; it has it's own Kindergarten & Elementary schools, Pool, Playground, Park, Tennis Courts & Basketball.

Entrance with Formal DINING ROOM on the right & Formal LIVING ROOM on the left (can be a Bonus Room or large Office), both with a front view.

Spacious Open Plan FAMILY ROOM with sliding doors onto large screened in Patio.

KITCHEN with granite counters, integrated sink, back-splash, 42" white cabinets, breakfast bar, pantry, matching stainless steel appliances & wine cooler.

DINETTE off kitchen with back view.

All living spaces have 'quality modern laminate floors'.

Spacious MASTER BEDROOM with walk-in-closet.

MASTER BATHROOM with large garden tub, separate shower, maple vanity with dual sinks, framed mirrors & private W.C.

BEDROOMS 2 & 3 share attractive BATHROOM 2.

Inside LAUNDRY to 2 Car GARAGE with remote opener.

Welcome HOME!!!

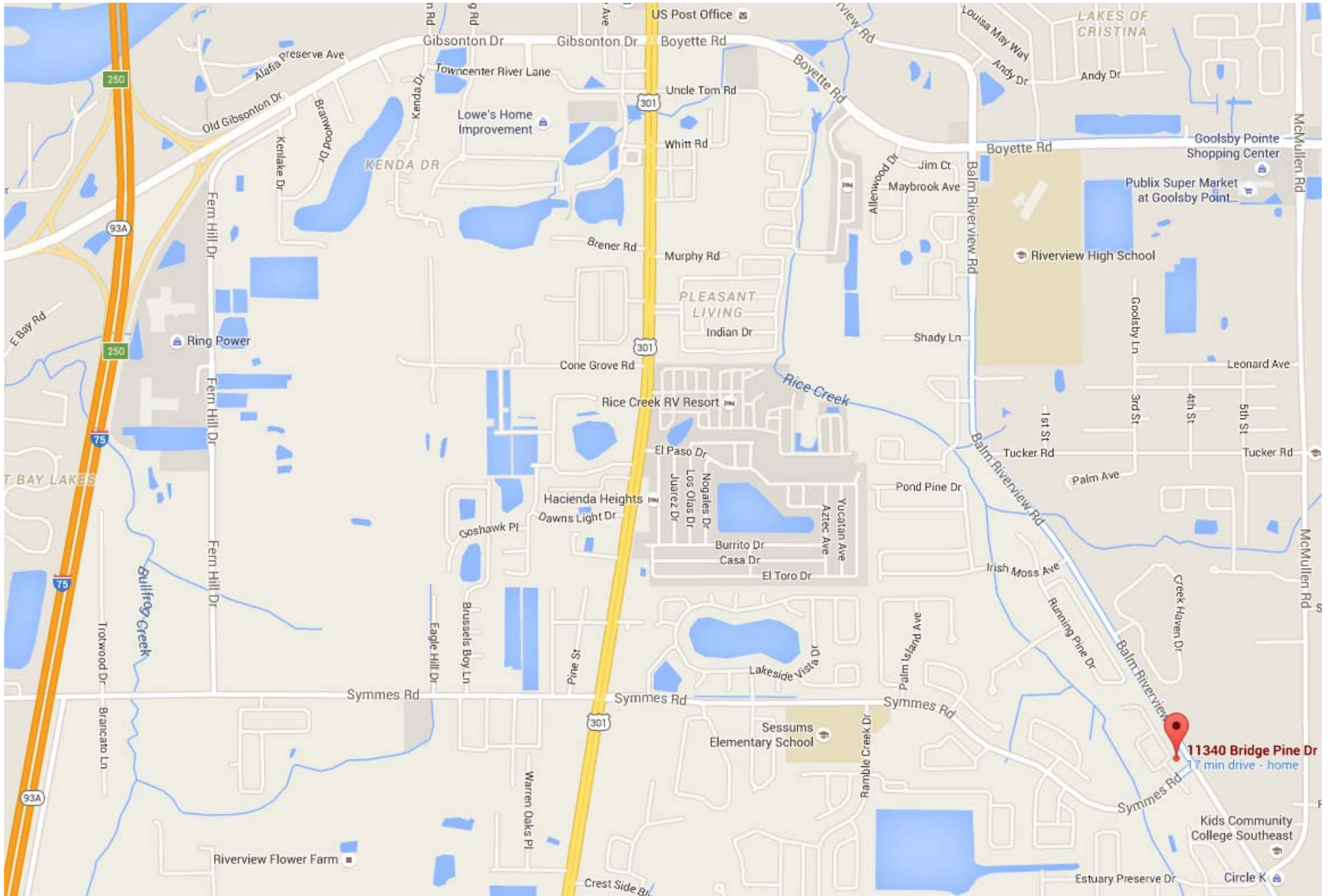


# directions

11340 Bridge Pine Dr, Riverview, FL 33569

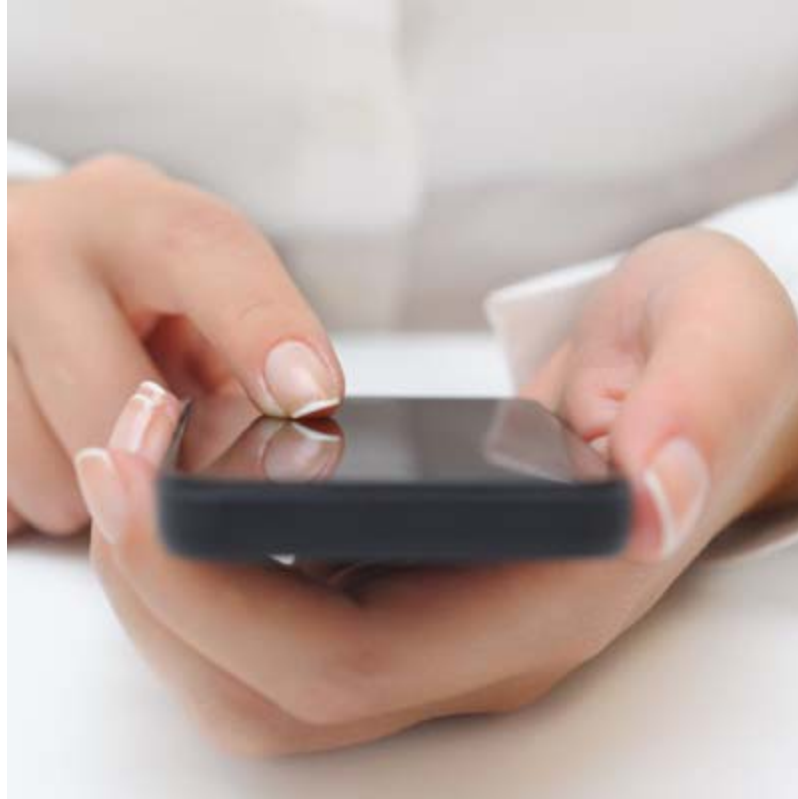
From I-75 go East on Gibsonton, Cross 301 into Boyette, at Riverview High School South on Balm Riverview Rd, 5th right into Symmes Rd, 1st right into Bridge Pine Rd, 1st right at T-junction, 2<sup>nd</sup> house on right hand side.

There's  
no  
place  
like  
**home.**



**Conveniently Located with Quick Access to I-75**





**SCHEDULE TO VIEW THIS PROPERTY**

**END**