

Begin Your VIRTUAL TOUR...
(...just a few seconds for the file to load - then...)



Keyboard RIGHT ARROW
for next slide...



11317 Grand Winthrop Ave, Riverview, FL 33578
Tranquil Oversized Lot – an Entertainers Paradise

SUMMARY

Look no further for your perfectly situated home in the much sought after & conveniently situated Winthrop community with shops, restaurants & top rated Charter Schools

3/2/2 – 1,579 / 2,436 Heated and Total Sq/Ft – 2011 – No CDD

Oversized landscaped tranquil lot with yard space on each side of house (only a few homes got these larger lots)

Paved Open & Covered Back Patio between house & garage – an Entertainers Paradise

Community Clubhouse, Pool, Playground, Spa & Fishing Ponds

FULL DESCRIPTION after pictures.



Front View – oversized lot – yard on each side of house



Front View – landscaped yard



Front Patio



Family Room – 18 x 14



Family Room with ceramic tiles



Family Room with front view



Family Room



Family Room to front entrance



Dining Room – 12 x 10



Dining Room with French Doors to back Patio



Kitchen with granite counters & breakfast bar – 12 x 12



Kitchen with 42" maple cabinets & matching appliances



Kitchen with Walk-in Pantry



Entrance



Guest half bathroom



Stairs to bedrooms



Upstairs landing



Master Bedroom – 17 x 13



Master Bedroom



Master Bathroom w/ walk-in shower, dual sinks, vanity, large walk-in closet & private W.C.



Master Bathroom with private W.C.



Bedroom 2 – 10 x 10



Bedroom 3 – 10 x 10



Bathroom 2 with shower in tub, sink & vanity



Laundry



Rear entrance 2 Car Garage



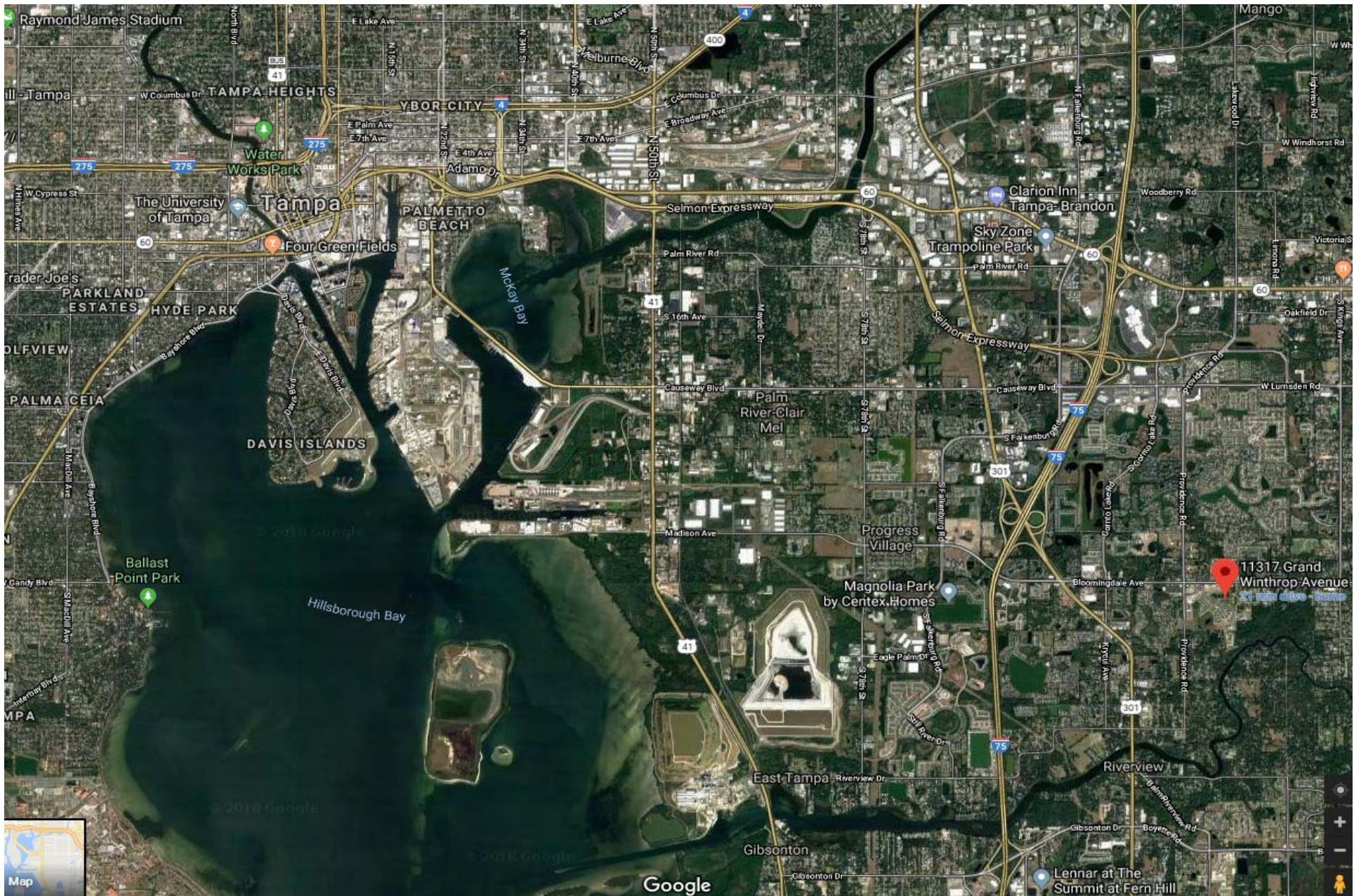
Large Paved Open & Covered Patio between house & garage



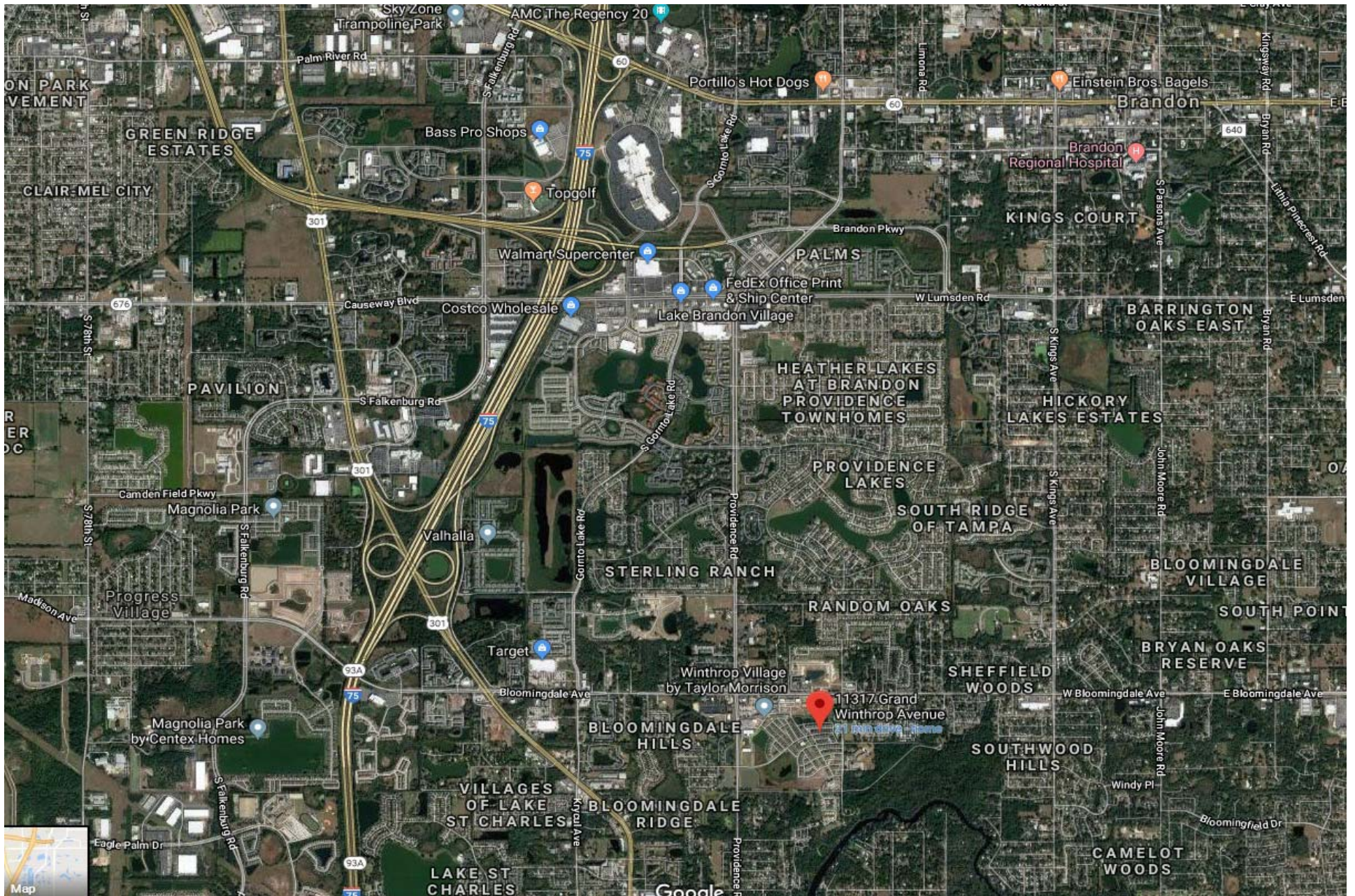
Entertainers Paradise



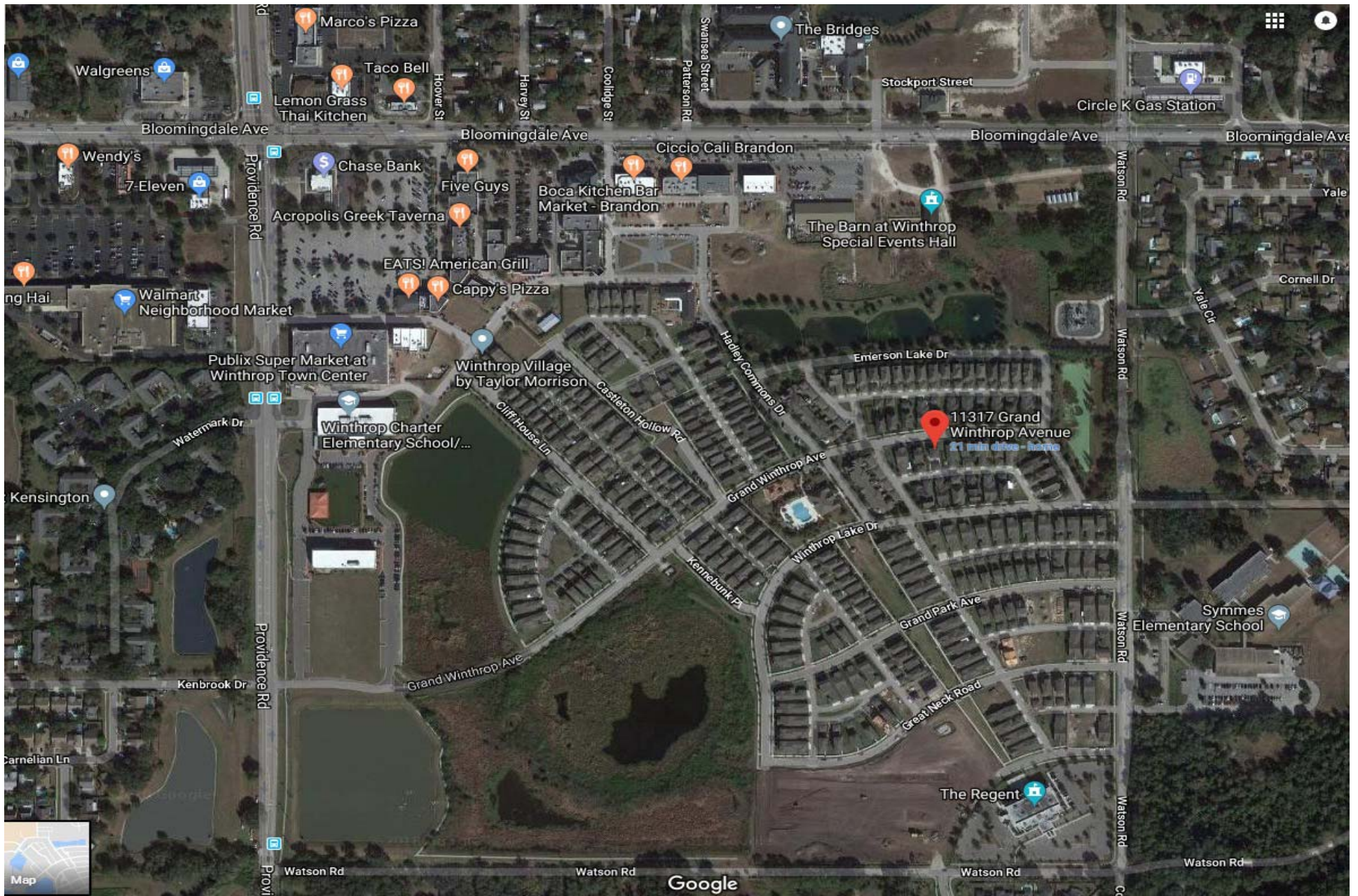
Steps across full length of Covered Back Patio



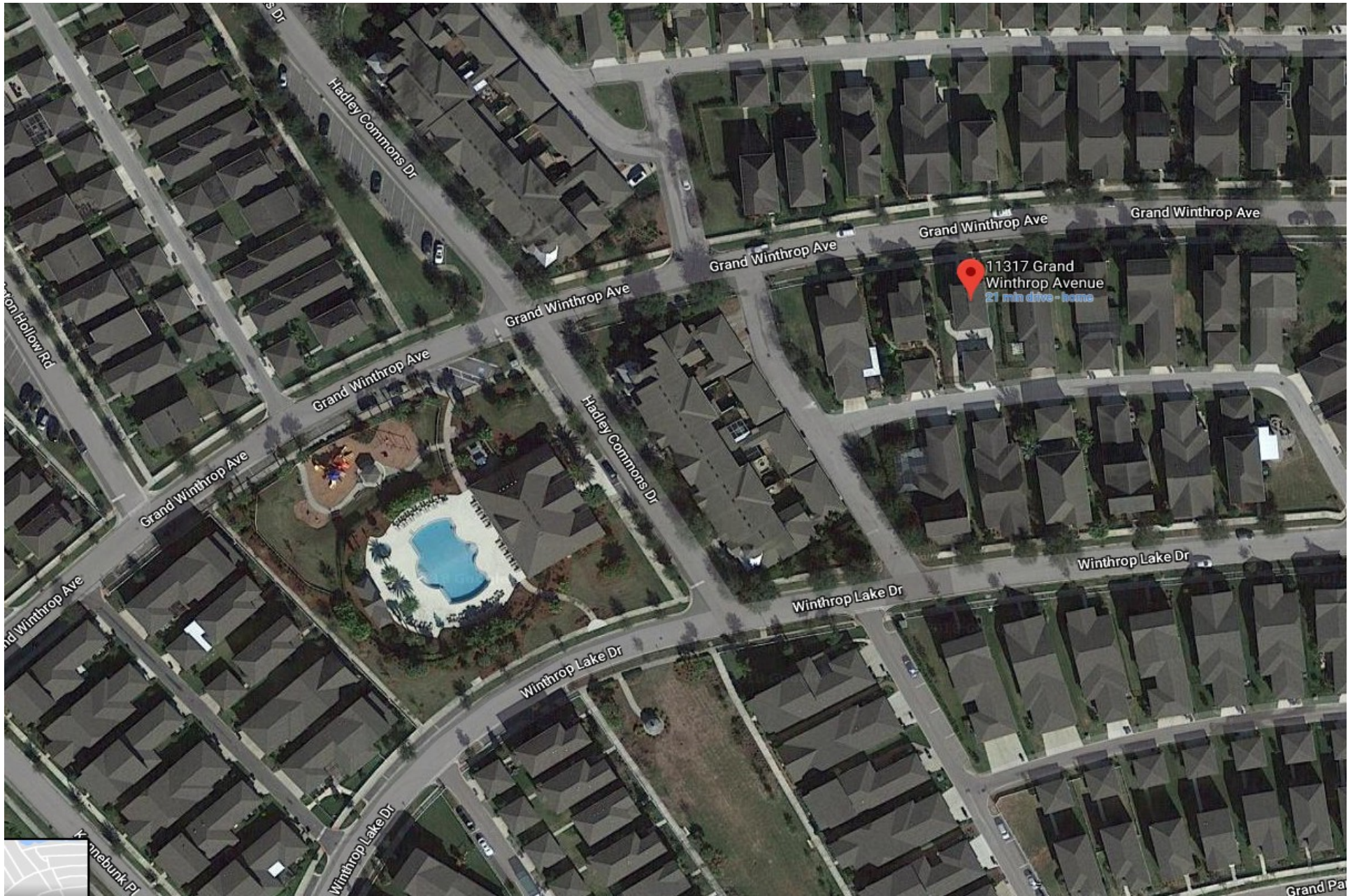
Aerial View in relation to Tampa Bay – house by 'red marker'



Aerial View in relation to Brandon



Aerial View – Winthrop Community



Aerial View in relation to Community Pool/Playground



Aerial View in Relation to Pool/Clubhouse



Community Pool, Clubhouse, Gym & Spa



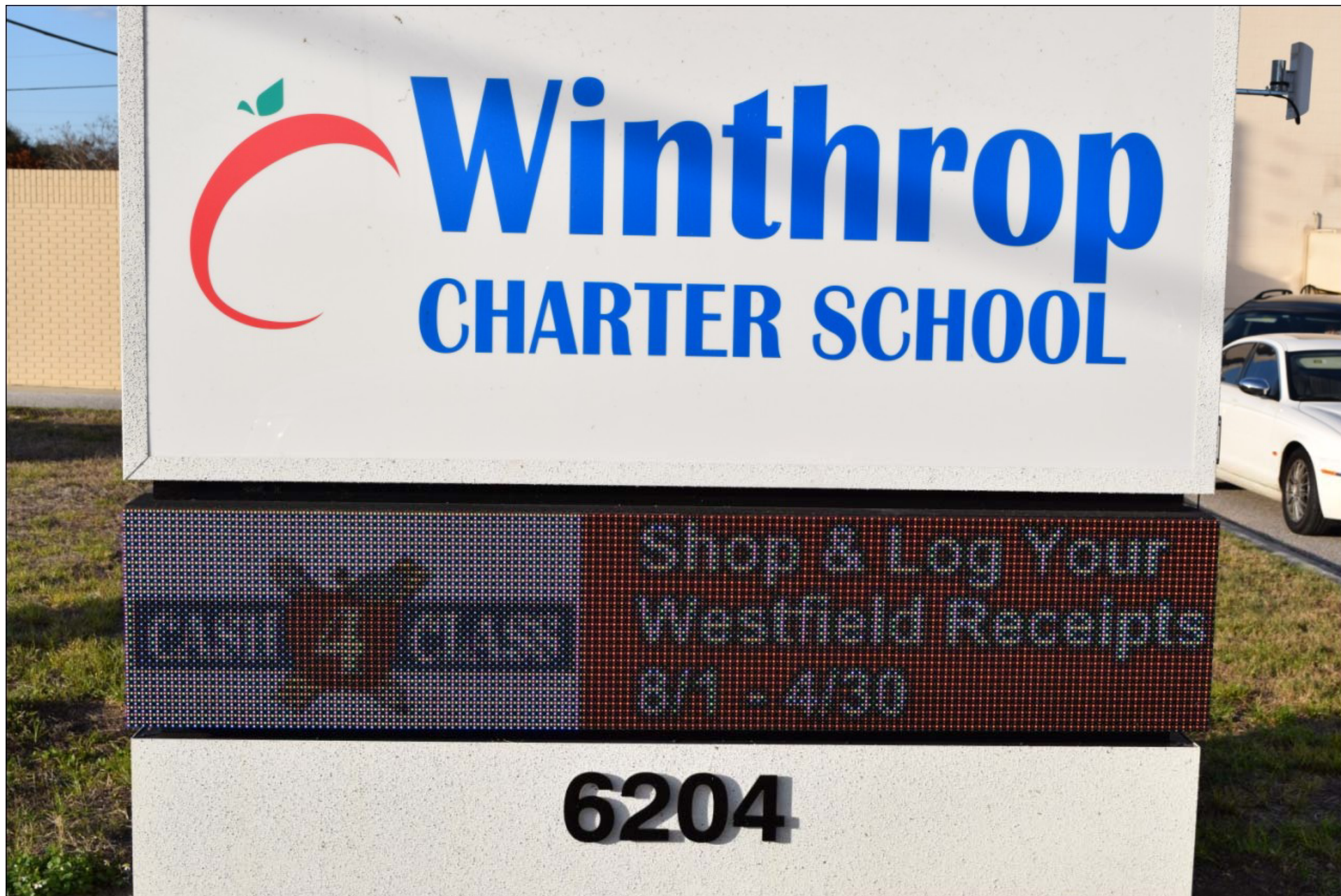
Community Playground



Community Gazebo & Park



One of several Fishing Ponds



Community Charter & Elementary Schools



Charter School



Winthrop Shopping Plaza in community



744056196★

Flood Zone 'X' – no flood insurance required

FULL DESCRIPTION

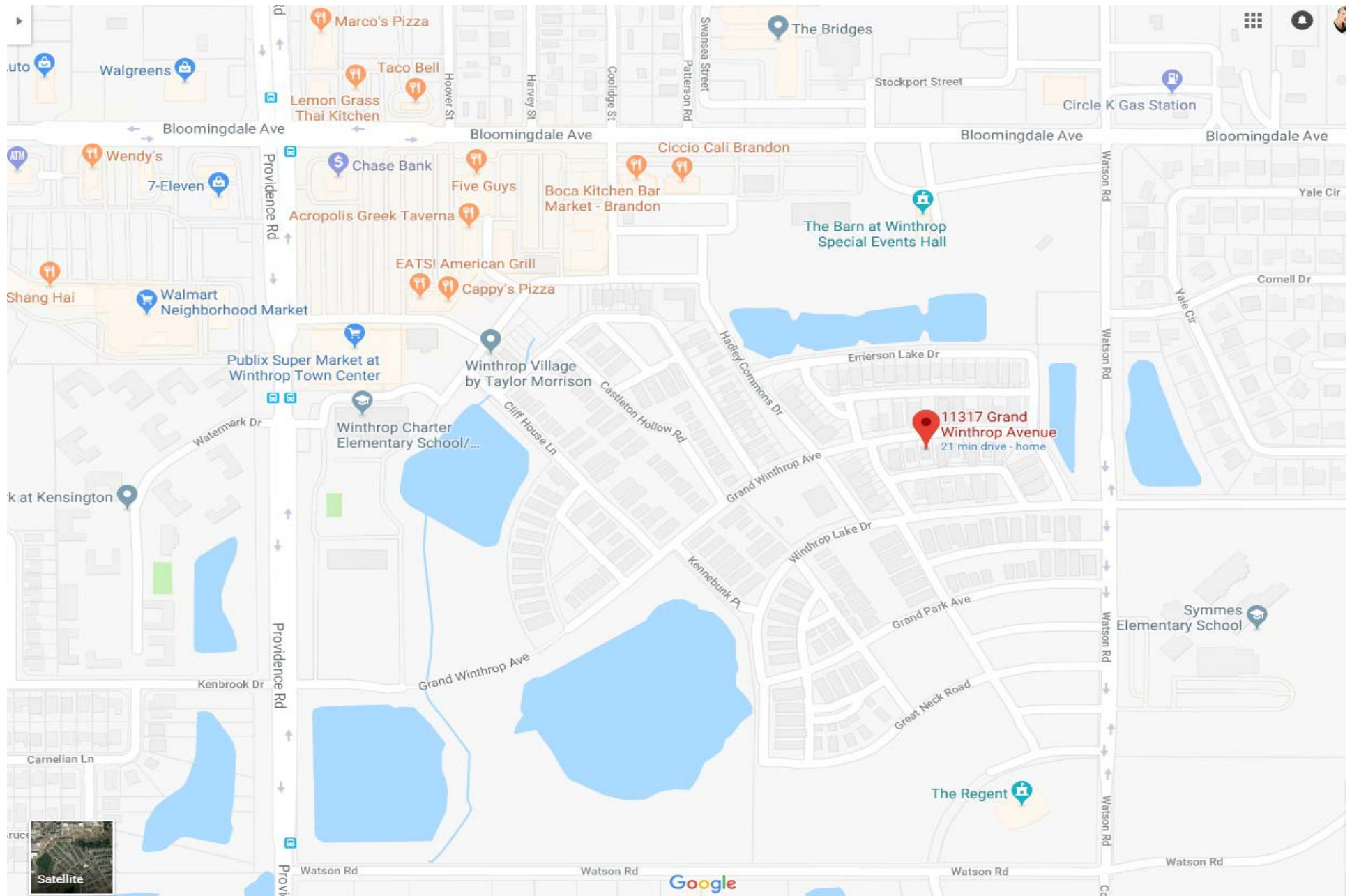
- Look no further for your perfectly situated home in the much sought after & conveniently situated Winthrop community with shops, restaurants & top rated Charter Schools
- Much loved & well maintained 3/2/2 home -- 1,536 / 2,371 Heated & Total Sq/Ft -- 2011
- Oversized landscaped tranquil lot with yard space on each side of house (only a few homes got these larger lots)
- Full length covered front Patio
- FAMILY ROOM with ceramic tiles & front view
- DINING ROOM with French Doors to back Patio
- KITCHEN with granite counters, breakfast bar, 42" maple cabinets with crown molding, matching appliances & Walk-in Pantry
- Guest HALF BATHROOM
- Spacious well-lit MASTER BEDROOM
- MASTER BATHROOM with large walk-in shower, dual sinks, vanity, large walk-in closet & private W.C.
- BEDROOMS 2 & 3 by BATHROOM 2 with shower in tub, sink & vanity
- LAUNDRY
- Rear entrance 2 CAR GARAGE
- Large Paved Open & Covered Back Patio between house & garage – an Entertainers Paradise
- Community Clubhouse, Pool, Spa & Playground 2 minutes from the house
- Community Gazebo, Walking paths & several Fishing Ponds
- Community Charter & Elementary Schools
- Winthrop Shopping Plaza



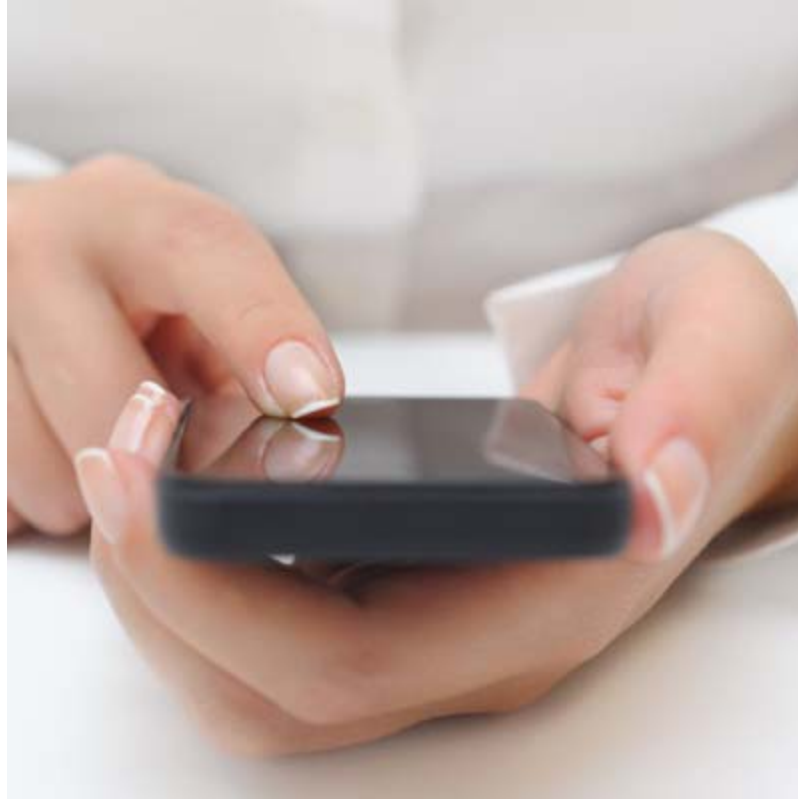
11317 Grand Winthrop Ave, Riverview, FL 33578

From cnr. of Bloomingdale & Providence go South on Providence & after 'Winthrop Schools' turn left on Grand Winthrop Ave – pass community pool/playground on the right to 3rd house on right

There's
no
place
like
home.



Winthrop is an conveniently situated community with shops, restaurants & schools



SCHEDULE TO VIEW THIS PROPERTY

END