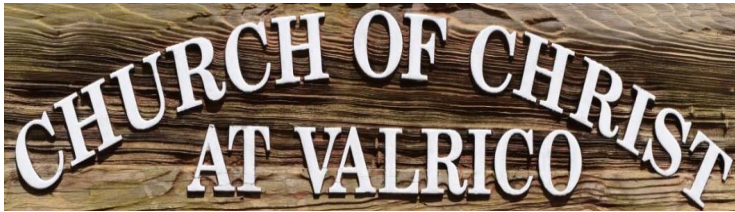


Begin Your VIRTUAL TOUR...
(...just a few seconds for the file to load).



Keyboard RIGHT ARROW
for next slide...



Church of Christ at Valrico
1520 S Miller Rd, Valrico, FL 33594

SUMMARY

2.45 Acre corner Lot (= 2 entrances) with 125 Parking Spaces

Building #1 – 2000 – 8,910 / 9,930 Heated & Total sq/ft includes a Foyer, 350 Seat Sanctuary, Baptistry, 2 Nurseries, Toddlers room, Media Room & 2 Bathrooms

Original Smaller Part of Building #1 – 1982 – 6 Classrooms, Large Utility room & 2 Bathrooms

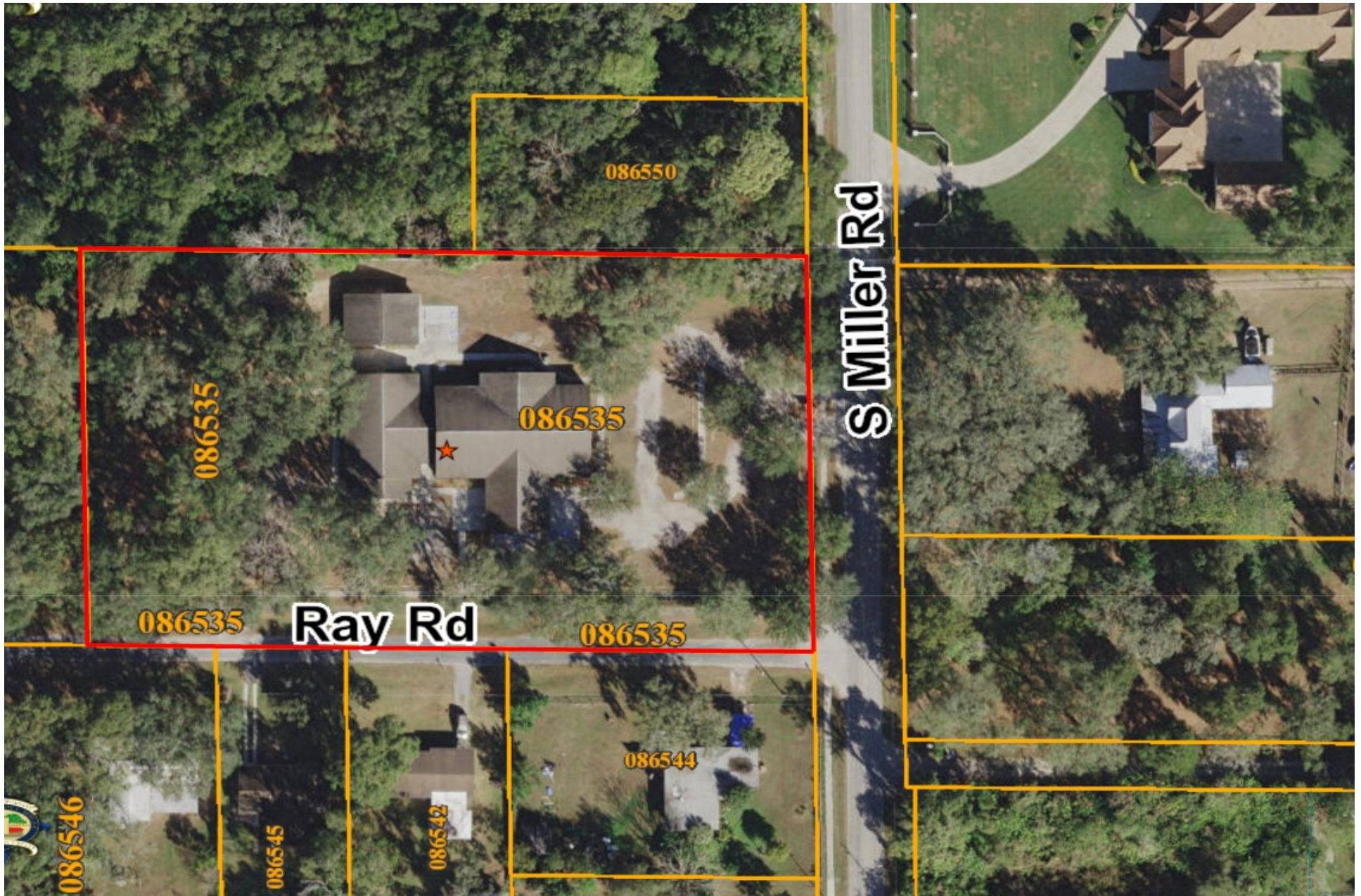
Building #2 – 2010 – 1,200 sq/ft – 2 Large Learning Center rooms & Church Office

The Church is well situated in popular residential communities in proximity to Valrico/Brandon & surrounding areas.

MLS # T3161812 – FULL DESCRIPTION after pictures.



Front/Side View – a well maintained building in good condition



Aerial View – 2.45 Acre Corner Lot – 2 Roads = 2 Entrances / Exits



Birds Eye View – Main building 9,930 sq/ft – 2nd Building 1,200 sq/ft



Passenger 'drop-off / pick-up' covered front porch – 35' x 30'



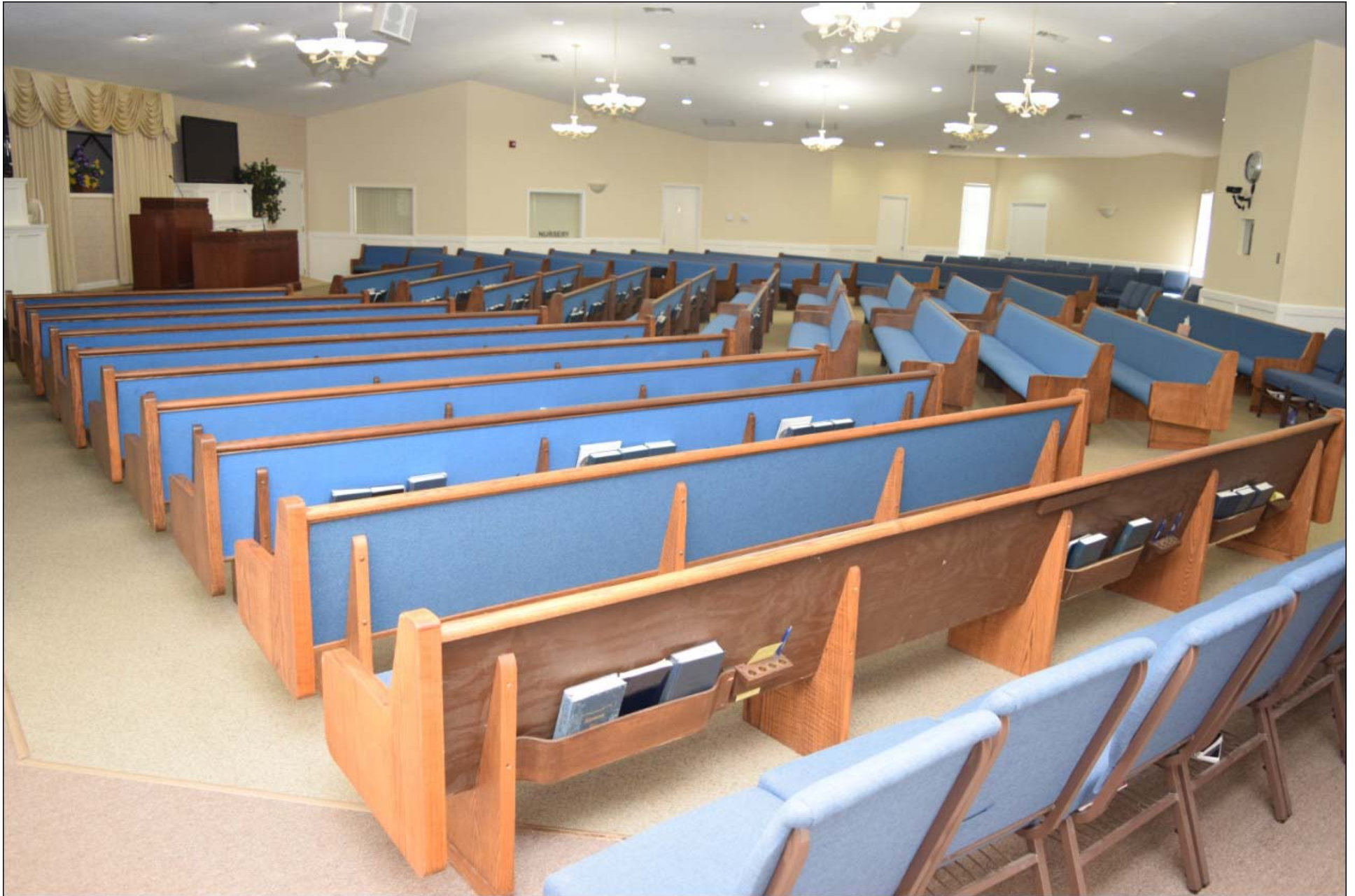
2nd Entrance Foyer left of Main Entrance foyer



Ray Rd 2nd Entrance / Exit



1,200 sq/ft Learning Center – 2 Classrooms & Church Office



350 Seat Sanctuary with padded pews plus single chairs



Baptistry & change rooms behind the Pulpit w/ 2 large media TV's



Pulpit on stepped platform w/ media room center/back



Mothers Nursery #1 with viewing window to auditorium



Mothers Nursery #2 with viewing window to auditorium



Toddlers care room off Mothers Nursery #2 – 10 toddler station



Toddler diaper changing station – connects to Mothers room #2



Foyer #2 with North & South entrance – 40' x 12'



Hallway w/ closet off Foyer #2 – open door to auditorium in far background



10 Built-in closet hallway leading off to Classrooms – 4 Storage walk-in closets



Large Multi-function room ready to be converted to your need – 27' x 12'



Classroom #6 – 34 Chairs – 25' x 15'



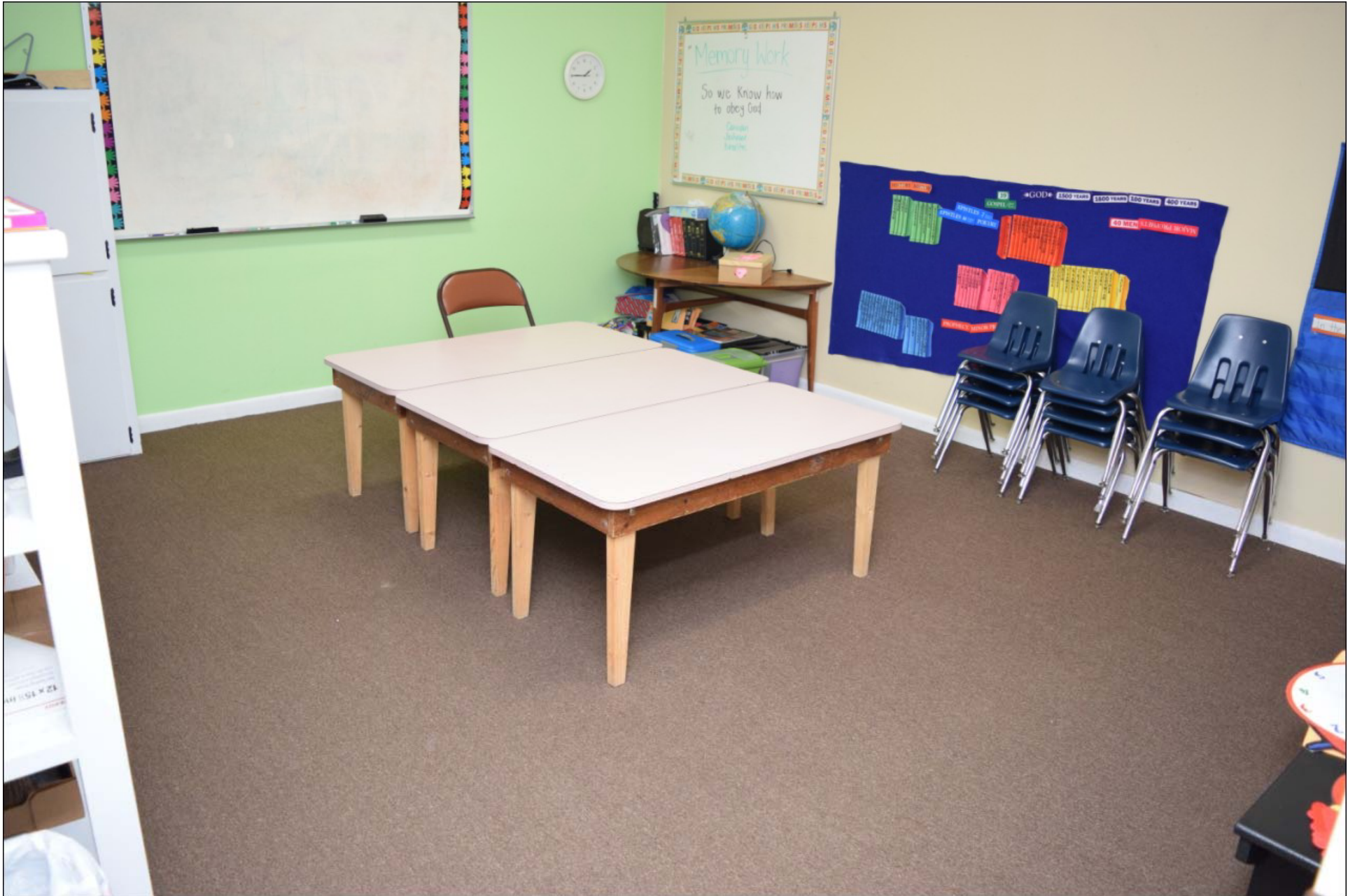
Classroom #5 – 24 Chairs – 20' x 13'



Classroom #4 – 20 Chairs – 19' x 13'



Foyer #3 with exit to building #2



Classroom #3 – 16' x 14'



Classroom #2 – 16' x 14'



Classroom #1 – 16' x 15'



Paved covered walkway connecting to building #2 on the left



Learning Center Room #1 with 15 stations – 22' x 18'



Learning Center Room #2 with 14 stations – 29' x 17'



Church Office with viewing window over Learning Room #1



Men's Bathroom #1



Ladies Bathroom #1



Handicapped stall in Ladies Bathroom #1



Men's Bathroom #2



Ladies Bathroom #2



Kitchenette



Garden / Maintenance Shed – 16' x 10'

350 SEAT CHURCH FOR SALE

- * 2.45 ACRE LOT
- * 3 NURSERIES
- * 4 BATHROOMS
- * 9 CLASSROOMS
- * STORAGE ROOMS
- * 125 CAR PARK
- * MEDIA ROOM
- * 3 FOYERS
- * BAPTISTRY
- * CHURCH OFFICE

Smiley Papenfus - 813.600.3292

www.SmileySold.com



Real Estate Road-side Sign

Full Description...

- * Look no further for your new church home -- **schedule a showing**.
- * This is a loved & well maintained **350 SEAT SANCTUARY** on a **2.45 Acre** CORNER LOT with **125 Parking Spaces** – 2 ROADS = 2 entrances/exits.
- * 10,110 / 11,290 Heated & Total sq/ft.
- * Passenger '*drop-off / pick-up*' covered front porch – 35' x 30.
- * **BUILDING #1**:- 8,910 sq/ft – Original smaller part built in **1982**; Larger part including 350 SEAT SANCTUARY built in **2000** & includes an ENTRANCE FOYER (3 FOYERS in total), a BAPTISTRY & change rooms, 2 MOTHERS NURSERIES, TODDLERS care room, MEDIA room, 6 CLASSROOMS, a large MULTI-FUNCTION room ready to be converted to your churches need, KITCHENETTE, 4 BATHROOMS, 4 STORAGE walk-in closets, 10 STORAGE built-in closets.
- * **BUILDING #2**:- 1,200 sq/ft – Built in **2010** & includes 2 large LEARNING CENTER CLASSROOMS with '*29 work stations*' & Church OFFICE.
- * Garden / Maintenance SHED – 16' x 10'.
- * The Church is well situated in popular residential communities in proximity to Valrico/Brandon & surrounding areas.
- * The Church is in SAFE **no-flood-zone 'X'**.
- * Welcome HOME!!!

directions

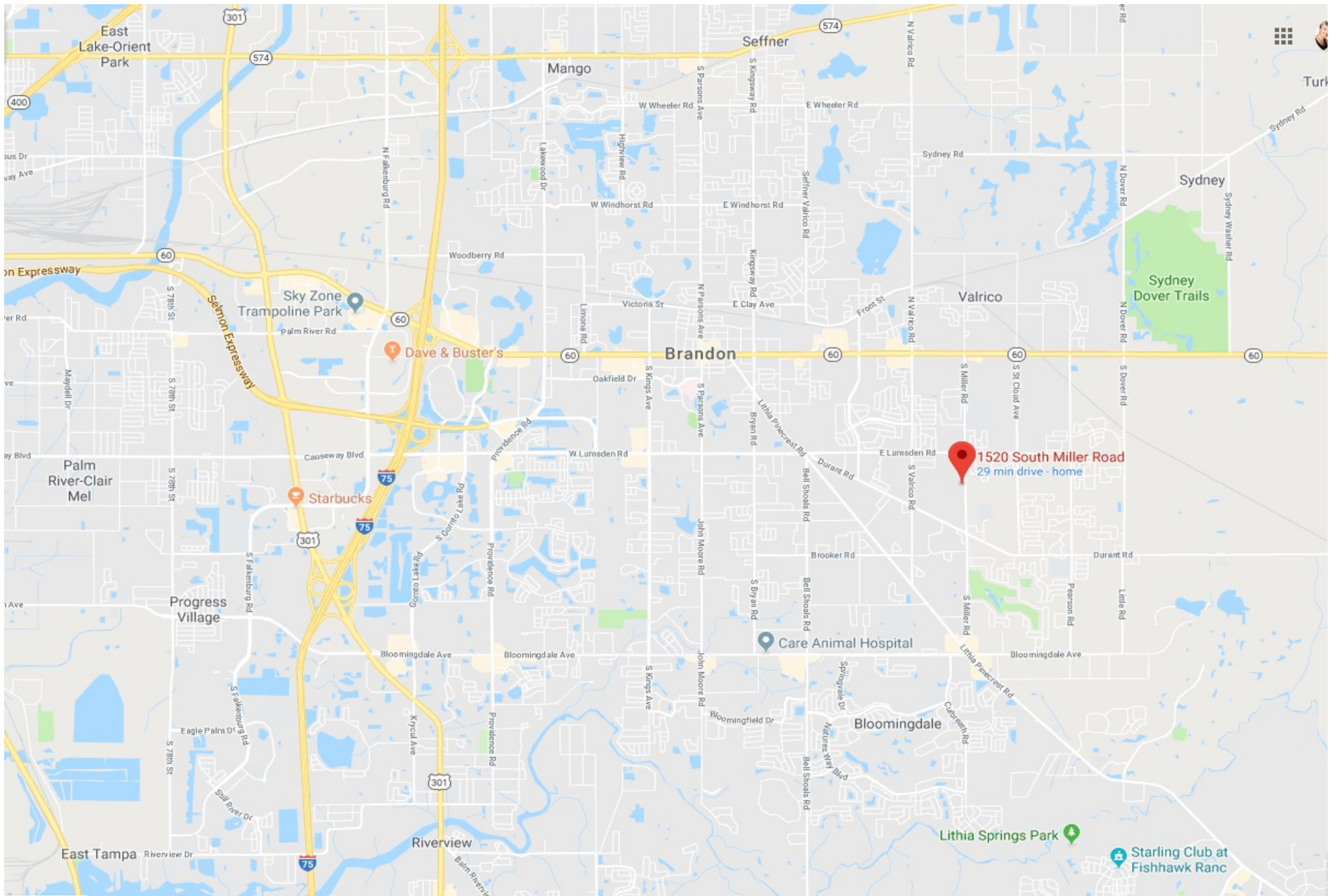


Church of Christ at Valrico
1520 S Miller Rd, Valrico, FL 33594

From I-75 go E on 60, S on Miller Rd, Cross Lumsden – Church on right

There's
no
place
like
home.





The Church is well situated in popular residential communities

Specializing in Matching Clients to their Right-fit Property
Smiley Papenfus - Your Tampa Church Specialist/Realtor

SMILEY & MARLENE PAPERFUS
Making Real Estate Dreams Reality

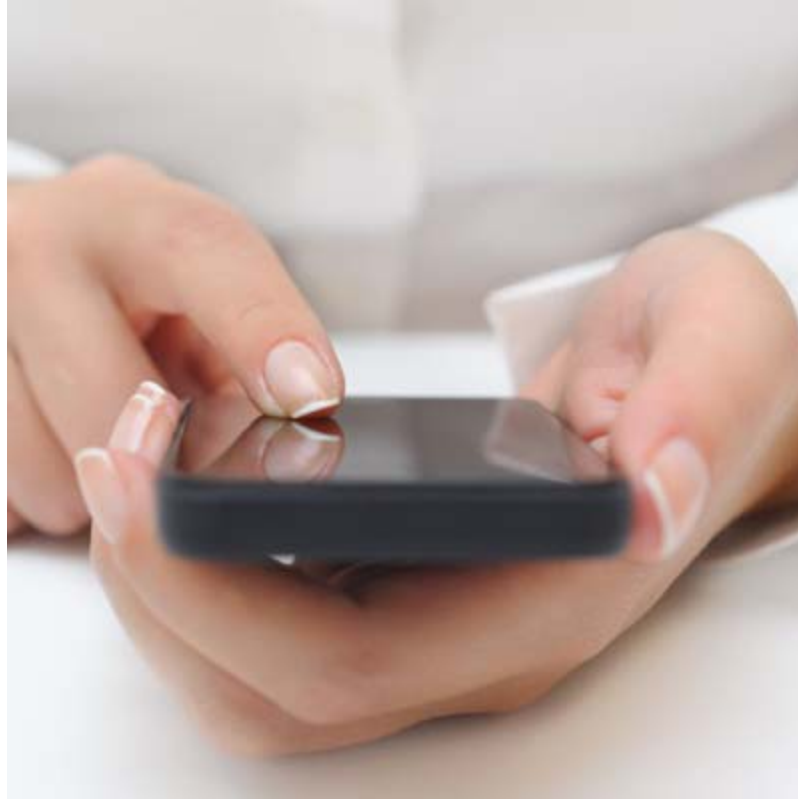
ALIGN RIGHT
Realty

MULTIPLE LISTING SERVICE
MLS REALTOR EQUAL HOUSING OPPORTUNITY

SmileyPapenfus@gmail.com

813.600.3292 (O) 813.765.6145 (C)
Why Smiley? → www.SmileySold.com

Business Card Front



SCHEDULE TO VIEW THIS PROPERTY

Welcome Home!!!



 **SOLD.com**

Why Smiley? → SmileySold.com

Your Experienced, Successful
& Professional Realty Team



Business Card Back

END