

Begin Your VIRTUAL TOUR...
(...just a few seconds for the file to load).



Keyboard RIGHT ARROW
for next slide...



4609 River Close Blvd, Valrico, FL 33596
In popular Bloomingdale Golf Course Community

SUMMARY

4/3/3 – 2,496 / 3,439 Heated and Total Sq/Ft – 2000.

PATIO/POOL/LANAI/POND/CONSERVATION.

**Well designed 3-Way Split Plan - 4th
BEDROOM/BATHROOM 3 makes an excellent
GUEST/GRANNY SUITE.**

**In popular Bloomingdale Golf Course Community, ideally
situated to sports & shopping amenities – Large
community Park nearby - perfect to jog or walk your dog.**

MLS # T2821346 - FULL DESCRIPTION after pictures.



Front view - 4/3/3 - 2,496 sq/ft - 2000



Covered front patio



Formal living room with sliding doors onto covered back patio/pool/lanai/pond/conservation



Dining room with front view



Dining room/entrance



Kitchen with island, breakfast bar, travertine, pantry, matching stainless steel appliances



Dinette with sliding doors onto back patio



Open plan family room



Master bedroom with back pool/pond/conservation view



Master bathroom with dual sinks, garden tub & separate shower



Master bathroom with dual sinks, garden tub & private W.C.



Bedroom 2



Bedroom 3



Bathroom 2 shared by bedrooms 2 & 3



Bedroom 4 with back pond view makes a perfect guest/granny suite with bathroom 3



Bathroom 3 used by bedroom 4



Attached laundry with access to 3 car garage - attic



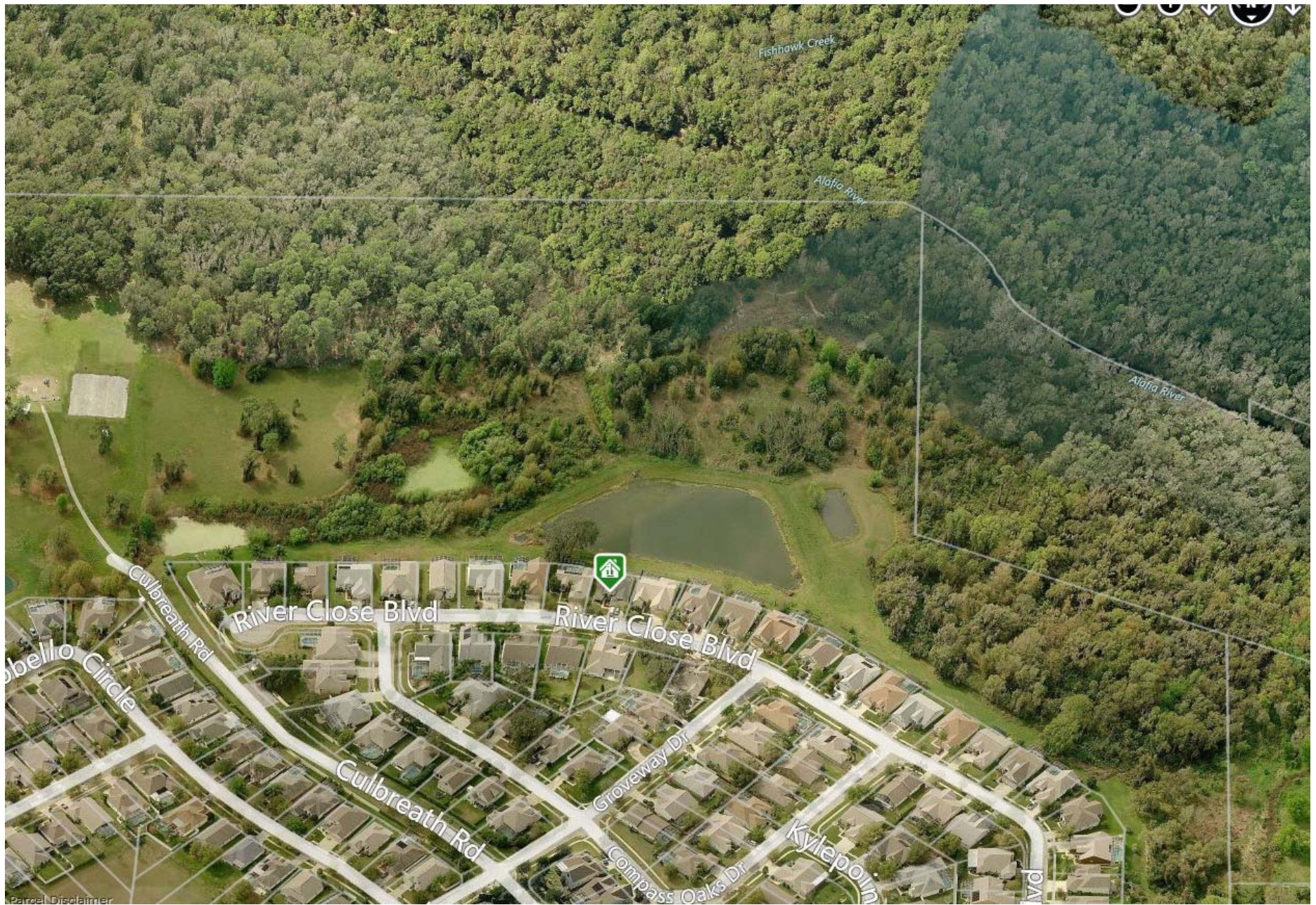
Covered back Patio with spectacular pool/pond view



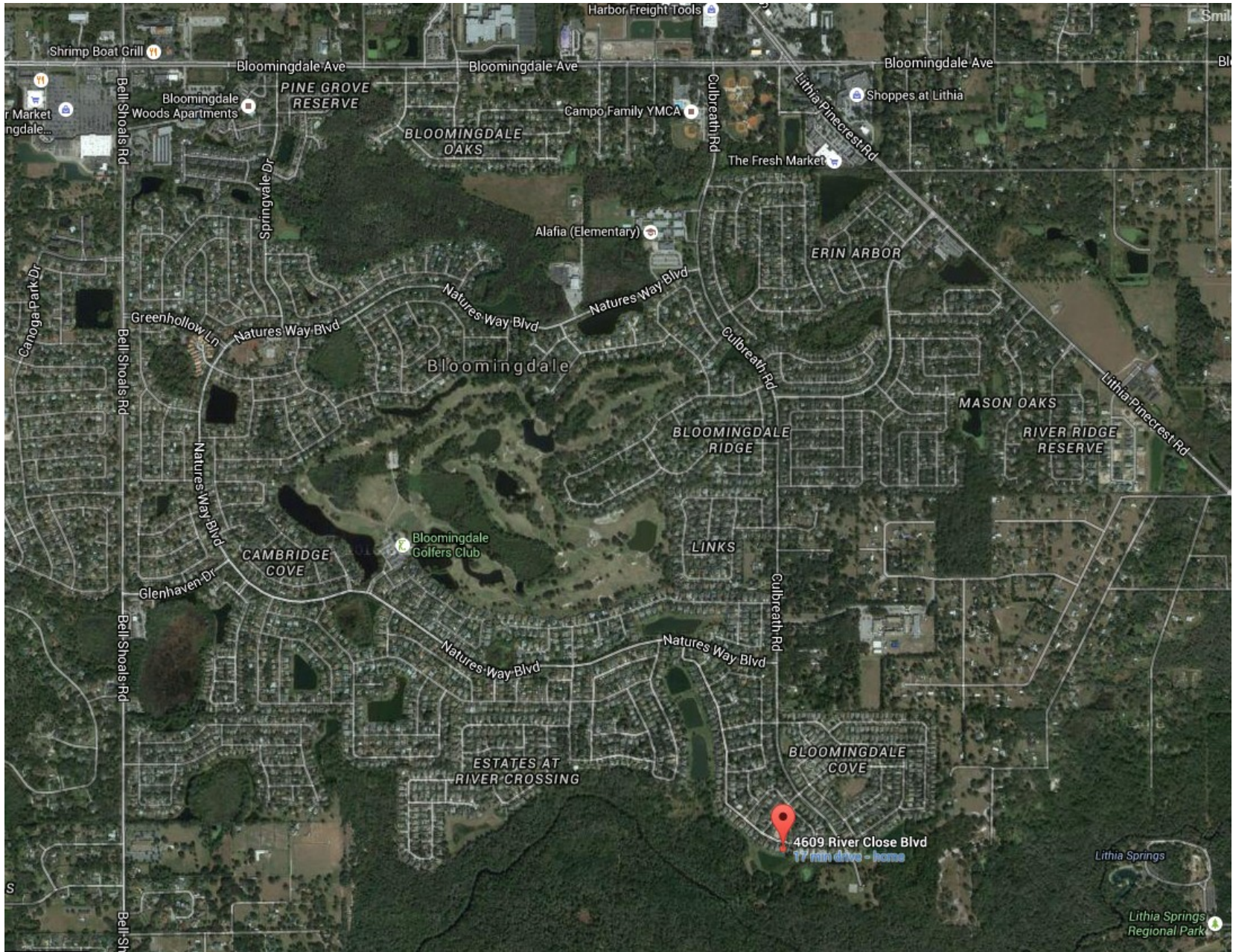
Large pool/lanai with breathtaking pond/conservation view



This is your personal fishing paradise and daily private view



Aerial view of pond/conservation/walking trails & Alafia river



Popular Bloomingdale Golf Course Community close to sports & shopping amenities

Full Description...

4/3/3 -- 2,496/3,439 Heated & Total Sq/Ft respectively -- 2000.

PATIO/POOL/LANAI/POND/CONSERVATION.

Well designed 3-Way Split Plan - 4th BEDROOM/BATHROOM 3 makes an excellent GUEST/GRANNY SUITE.

In popular Bloomingdale Golf Course Community, ideally situated to sports & shopping amenities -- Large community Park nearby - perfect to jog or walk your dog.

Front covered PATIO -- Entrance onto Formal DINING & LIVING ROOMS with sliding doors onto COVERED BACK PATIO.

Open Plan KITCHEN with ceramic tiles, island, pantry, breakfast bar, matching stainless steel appliances, DINETTE & spacious FAMILY ROOM with wood-burning fireplace.

MASTER BEDROOM with His&Hers walk-in-closets.

MASTER BATHROOM with dual vanities, large garden tub, separate shower & private W.C.

BEDROOMS 2 & 3 share BATHROOM 2.

Inside LAUNDRY -- 3 Car attached GARAGE.

Breathtaking POOL/POND view waiting for her new homeowners to enjoy everyday with breathtaking Tampa sunsets - your personal fishing paradise.

Painted inside & outside May 2016 -- NEW ROOF July 2016.

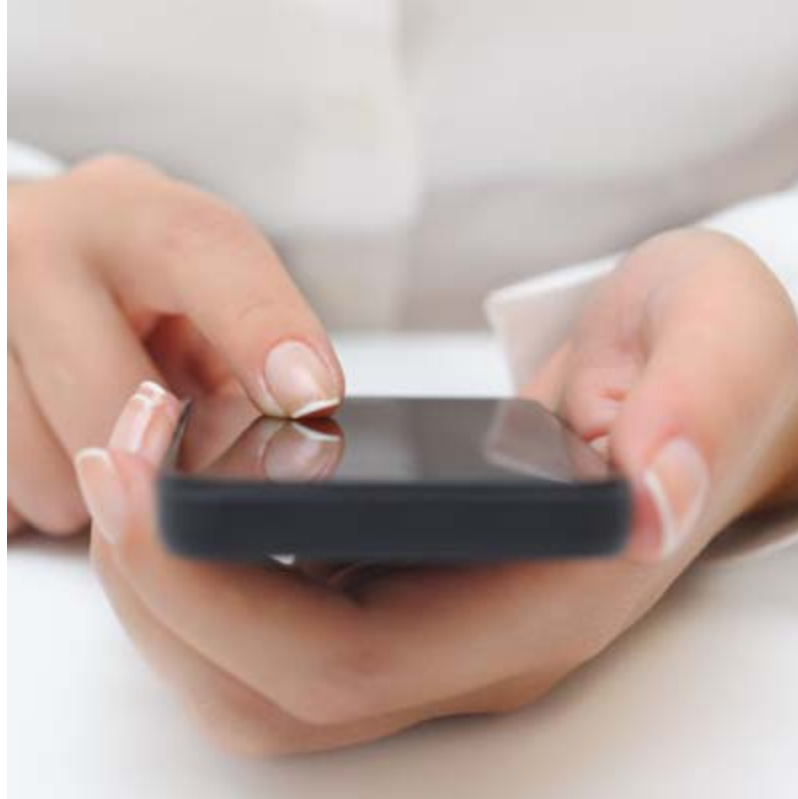
Welcome HOME!!!

directions

4609 River Close Blvd, Valrico, FL 33596

From Lithia Pinecrest Rd West on Bloomingdale, Left in Culbreath,
After 2nd Stop 2nd right into Groveway & at T-junction left into
River Close - house on right hand side - #4609.

There's
no
place
like
home.



SCHEDULE TO VIEW THIS PROPERTY

END