

**For your Quick 'High Quality Picture' VIRTUAL TOUR...  
...pause a few seconds till the file is loaded, then...**



**Keyboard RIGHT ARROW  
for the next slides...**



**15324 Vireoglen Ln, Lithia, FL 33547  
FishHawk Ranch**

# SUMMARY

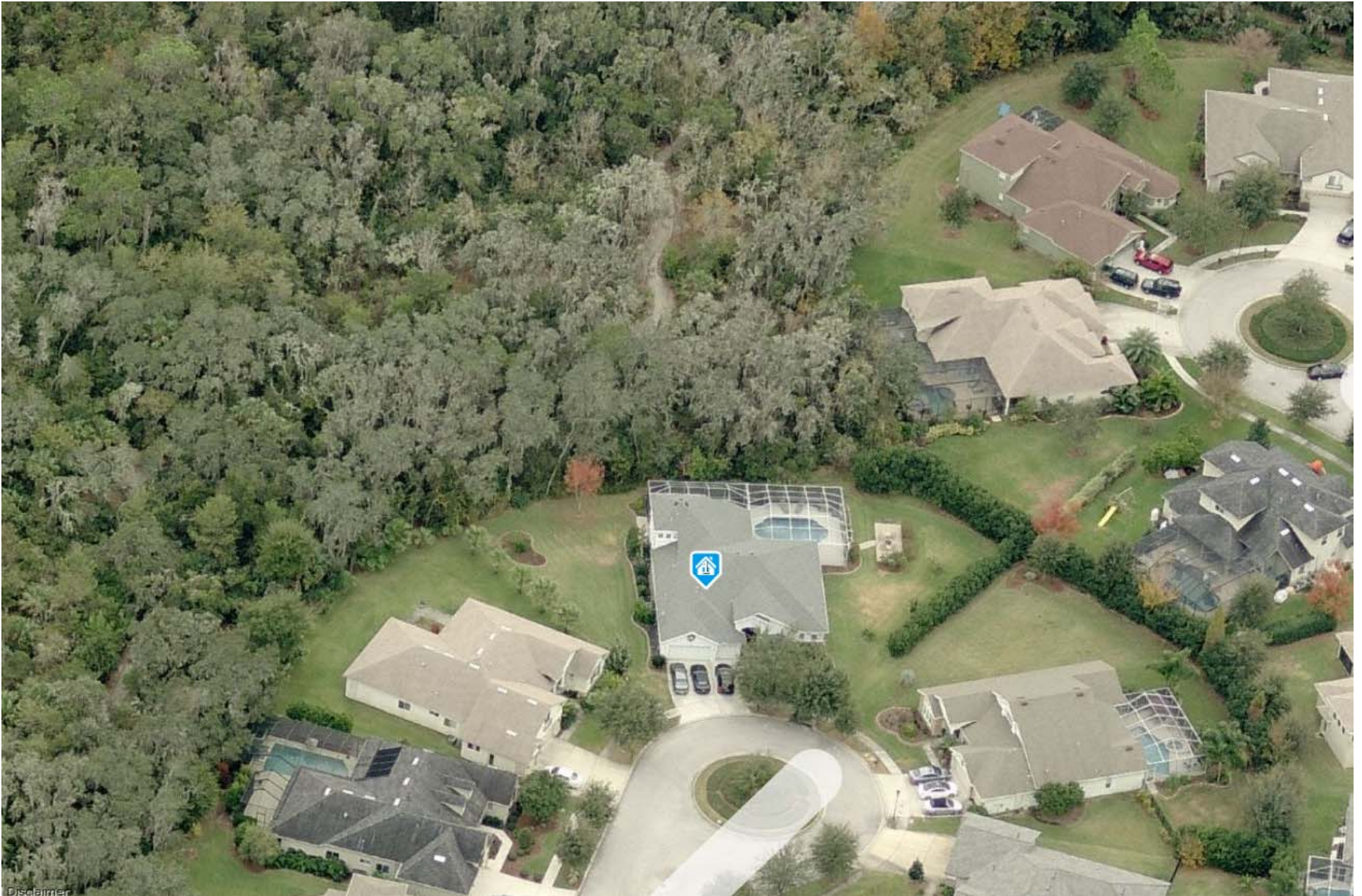
**3,272 / 3,930 Heated and Total Sq/Ft  
One Story with upstairs Bonus Room - Built in 2002**

**5 Bedrooms - 4 Bathrooms - 3 Car Garage  
0.45 Acre LOT, w/ deep conservation, no back neighbors  
and quick access to miles of wooded walking trails.**

**Pool/Patio/Lanai and Outdoor Kitchen.**

**The entertainers perfect home.**

**MLS # T2865125 - FULL DESCRIPTION after pictures.**



**House with the blue marker - double lot on deep conservation**



**Located in family friendly neighborhood Vireo Ridge**



**Front View - Safe and Quiet at end of cul-de-sac**



**Front Patio with decorative double doors**



**Formal Living Room with wood finish ceramic tiles 17' x 13'**



**Formal Dining Room off Kitchen 14' x 10'**





**Formal Dining Room - 4 Column Entrance Hall 14' x 10'**



**Family Room overlooking Pool and Conservation 20' x 17'**



**Kitchen with Quartz Counters and Breakfast Bar 17' x 15'**



**Kitchen with 40" five burner gas stove & double electric ovens**



**Dinette overlooking Pool and Conservation**



**Master Bedroom with sliding doors onto Patio/Lanai 17' x 13'**



**Master Bedroom His & Hers walk-in-closets**



**Master Bathroom with Garden Tub & Dual Head Shower**





**Master Bathroom with His & Hers Marble Vanities**



**Large Front Office 16' x 11'**



**Bedroom 2 - 11' x 11'**



**Bathroom 2**



**Bedroom 3 - 12' x 12'**



**Bedroom 4 with back conservation view - 13' x 11'**



**Pool Bathroom 3 with Glass Bricks walk-in shower**



**Stairs to private Bonus Suite (or Bedroom 5)**





**Upstairs Private Bonus Room (or Bedroom 5) 18' x 13'**



**Upstairs Bathroom 4**



**Outdoor Kitchen w/ Fridge, Kegerator, TV & Heater 23' x 10'**



**28' x 14' Pool w/ raised decks, fountain, lanai & conservation**



**Koi Pond with Rock Waterfall & UV Light**



**Fire Pit and Open 22' x 10' Paved Patio**

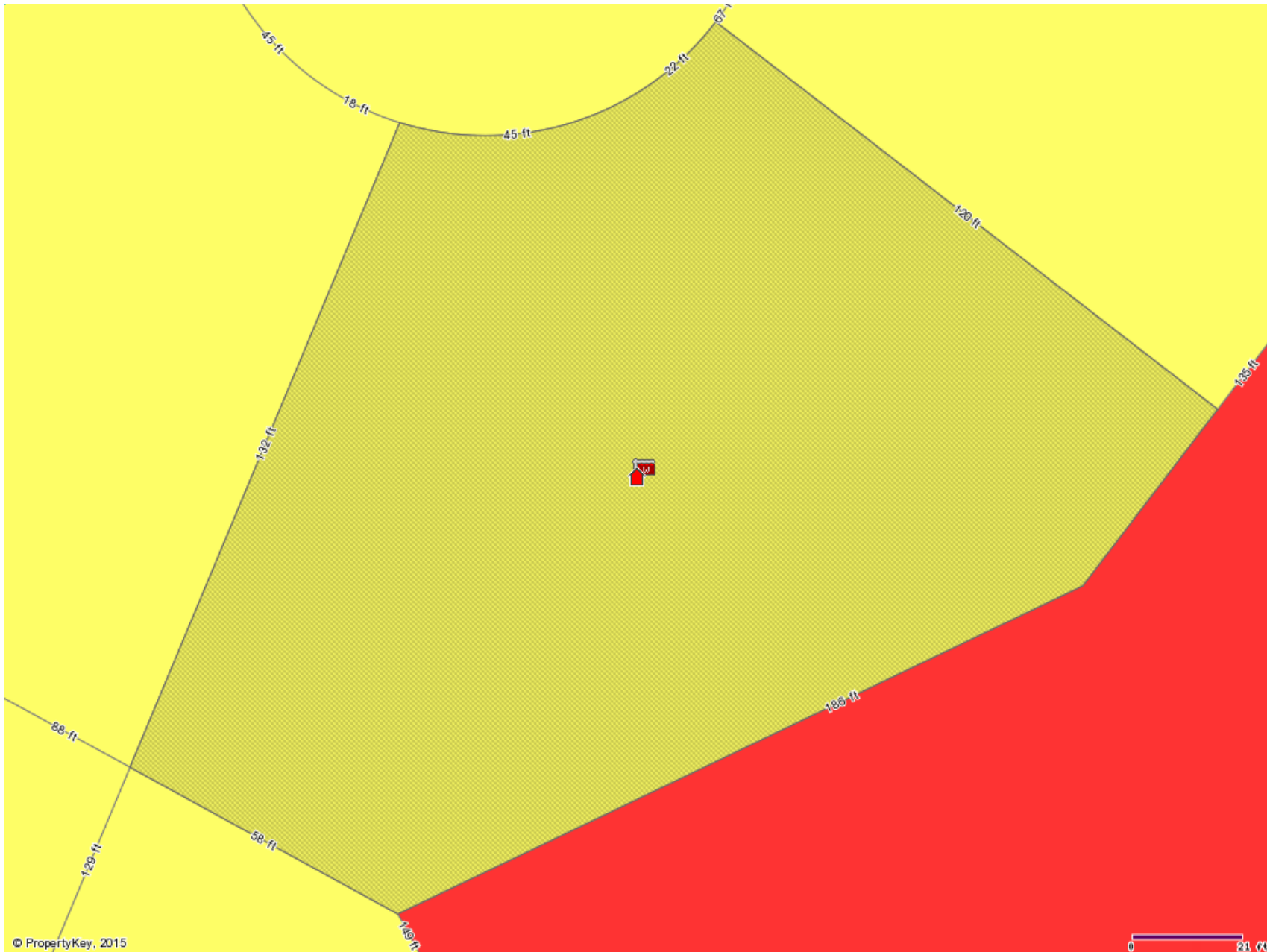


**Play ground for family 'Right Side' of the house**

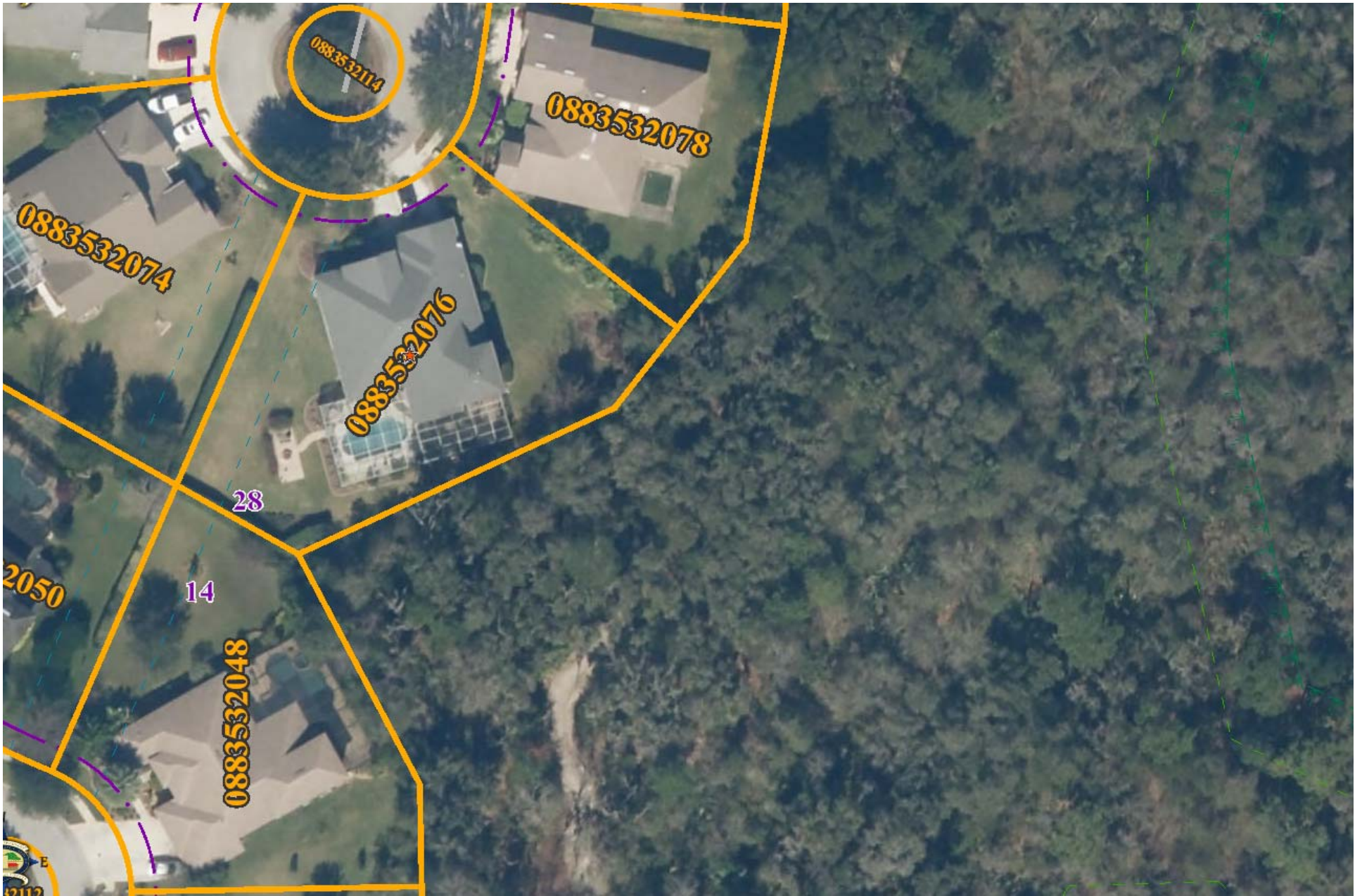


**Play ground for family 'Left Side' of the House**





**Lot Dimensions - 0.45 Acres**



**Double lot with miles of paved walking trails in woods**



**Back yard to paved walking trails in woods**



**Miles of paved walking trails through breathtaking nature**



**You get to enjoy your own Garden of Eden**



**Walking trails around the many fishing ponds**



**Wake up to birds singing and ducks on the ponds**

## FULL DESCRIPTION

- 5/4/3+Pool+Patio+Lanai+Out-door-kitchen+Conservation-privacy -- 3,272/3,930 Heated/Total Sq/Ft -- 2002.
- End of cul-de-sac 0.45 ACRE PRIVACY DOUBLE LOT on Deep Protected CONSERVATION -- From your back door slip into the woods to connect to miles of paved 'Garden-of-Eden' walking trails, perfect for walking, biking, fishing, etc.
- \$90,000 of quality UPGRADES.
- Covered FRONT PATIO with decorative double doors.
- ENTRANCE HALL with columns each side into FORMAL LIVING ROOM onto Patio, Pool, Lanai & Conservation view -- Separate DINING ROOM off Kitchen -- Wood finish ceramic tiles.
- Remodeled Chef's KITCHEN w/ Quartz counters, Stainless Steel under counter Sink, 40" five burner Gas Stove w/ dual electric ovens, Range hood, Breakfast bar (tiled below counter), Stainless steel appliances, Back-splash, Pantry -- DINETTE.
- Open plan FAMILY ROOM with sliding doors onto Pool/Lanai & custom Plantation shutters.
- Large MASTER BEDROOM, His & Hers fitted walk-in-closets.
- Large MASTER BATHROOM with His & Hers vanities, garden tub, large shower & private W.C.
- 4 ADDITIONAL LARGE BEDROOMS (5th bedroom is an extra large upstairs BONUS ROOM suite with the 4TH BATHROOM) -- 3RD BATHROOM is a pool bathroom.
- Large OFFICE with privacy double doors, custom Plantation shutters & front view.
- Fitted LAUNDRY -- 3 CAR GARAGE (all with openers).
- 28' x 14' POOL with raised decks, fountain & child safety fence -- Newly replaced LANAI stretches across the back of the house with KOI POND & ROCK WATERFALL.
- Large undercover OUTDOOR KITCHEN with granite counters, ice maker, refrigerator, kegerator, grill, 60" outdoor quartz heater & TV.
- Outside the lanai is a 22' x 10' open patio with FIRE PIT -- all these outdoor combinations make the perfect entertainment setting.
- EXTRA's:- Central vacuum -- Exterior repainted Fall 2014 -- Interior painted 2016 -- New plush carpets 2016 -- Top rated BEVIS ELEMENTARY SCHOOL zone -- FishHawk Ranch is Tampa's #1 living destination because of the top schools, exceptional community and a multitude of facilities (25 Miles of walking trails, Pools, Gyms, Tennis, Basketball, Softball, Volley ball, Skateboard park, Town Center, Entertainment, Movie theatre, Family activities, Shops, Restaurants & more...

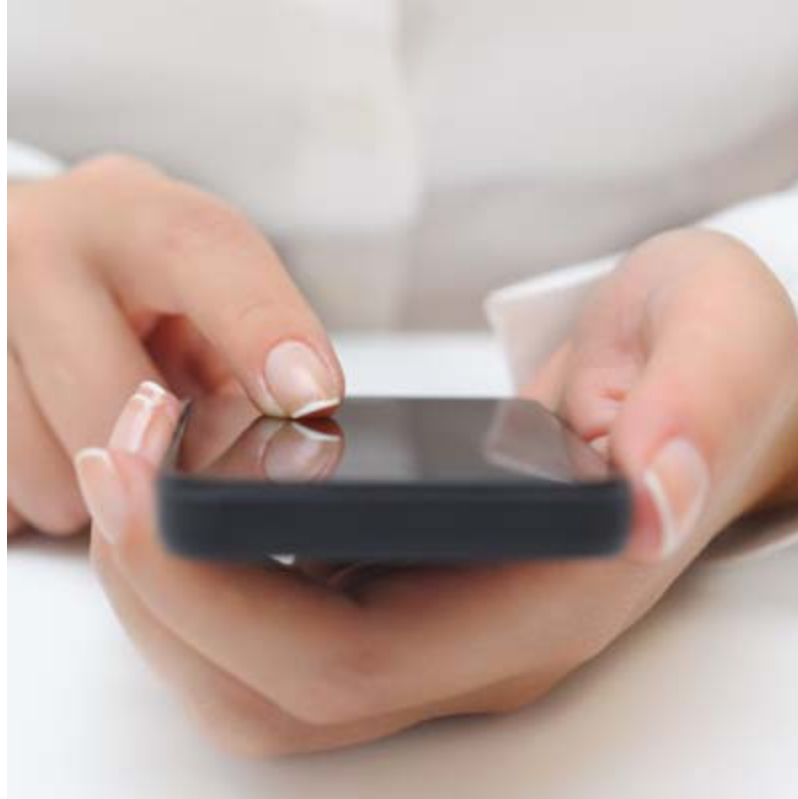


# directions

15324 Vireoglen Ln, Lithia, FL 33547 – FishHawk Ranch

From I-75 take Gibsonton exit 250 & go 7 miles East. At light right into FishHawk Ranch on Osprey Ridge Dr for 1.3 miles & Right into Vireo Ridge subdivision & left into Vireoglen Ln - last house on cul-de-sac.

There's  
no  
place  
like  
**home.**



**SCHEDULE TO VIEW THIS PROPERTY**

**END**